



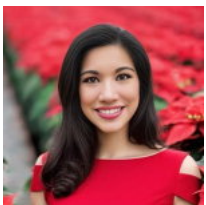
\$280,000

WHEELER ROAD, WALTHOURVILLE, GA, US, 31333

<https://jesuproperty.com>

- Land
- Unimproved Land
- Active

1.5 Acres offered for commercial use. Lo12 is currently zoned B2. Located behind the new Parker's Gas Station on the corner of Talmadge Road and Hwy 84. Recently booming intersection, Ideal for businesses and restaurants.



Janie V. Diggs

Realty Executives Liberty

Building Details

Fireplace: No

Community: Wheeler

